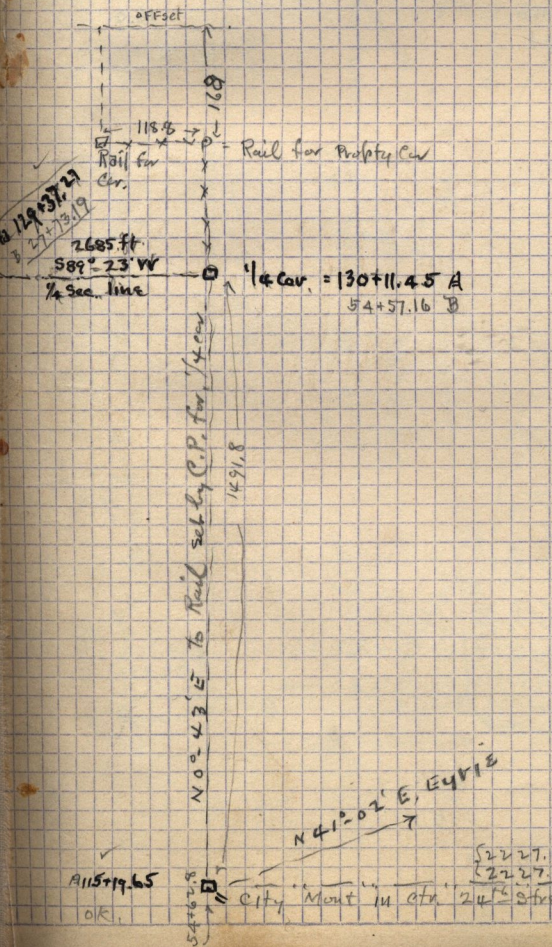
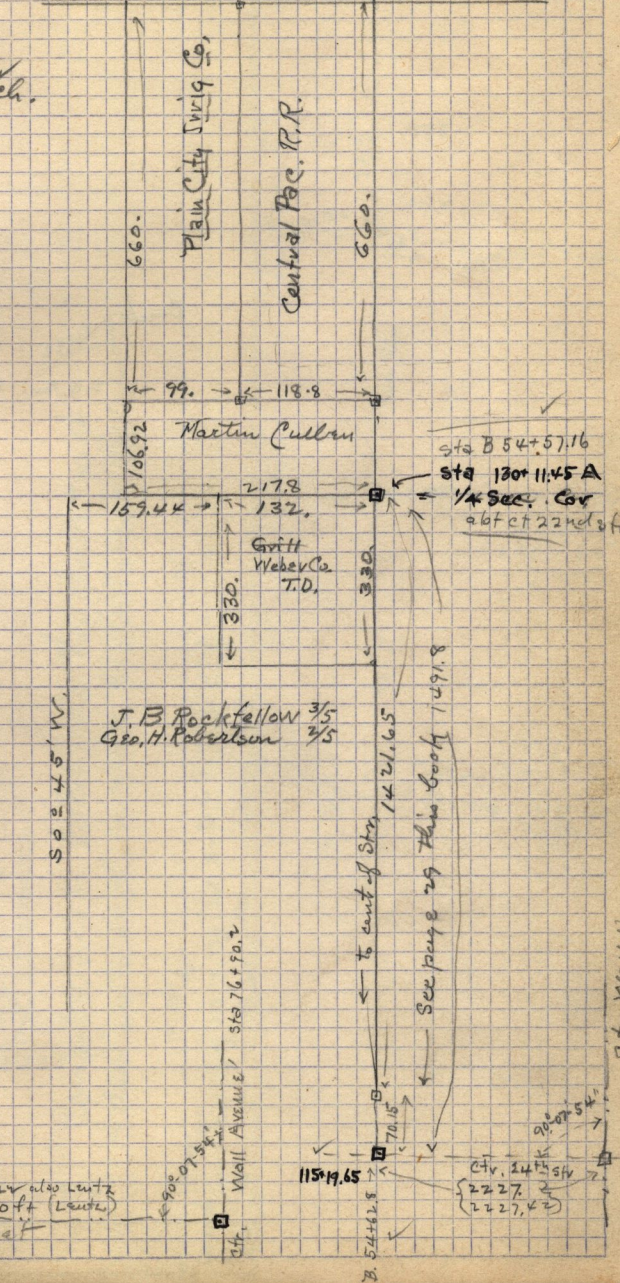
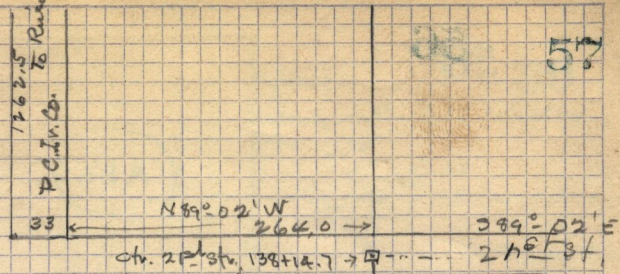


July 9-1906

57

L-353 - Mills H. Beardsley to P.C. Irr. Co.
 Pt. N.E. 1/4 Sec. 30, T. 6, N. - R. 1, W.
 Beg. 1.6 ch. N. & 1.80 ch. W. of S.E. cor. 1/4
 Sec. 30, ch. W. 1.50 ch. S. 10.00 E. 1.50 ch. G.
 Cont.

C-474
 Edwards et al + C.F. Middleton
 decree of Court
 to P.C. Irrig. Co.
 Pt. N.E. 1/4 Sec. 30, T. 6, N. - R. 1, W.
 Beg. 12.62 ch. N. & 4. ch. W. of S.E. cor.
 of 1/4 - 7, 14, 13 ch. W. 50 ch. S. 17.13 ch.
 30.50 ch. to beg. (Feb. 11-1879.)



1/4 Cor. = 130+11.45 A
 54+57.16 B

N 41° 02' E, 447.8

City Mont in Ch. 24th Street

2227.0 ft (Lantz)

2227.0 ft (Lantz)

2227.0 ft (Lantz)

2227.0 ft (Lantz)

2227.0 ft (Lantz)

A115+19.65
 OK

City, Wail Ave